



Savel

Our Fabrics Find a Home in the Most Beautiful Spaces

ABOUT SAVEL INC.

Sallie Hall and her daughter Andrea Elish's appreciation for craftsmanship comes from their time living abroad. Sallie was decorating her house in Mexico City when she discovered the hand-loomed woolen fabrics produced by a community of local weavers. Sallie's desire to interpret those local textile traditions for the American market led to the creation of Savel when she moved back to the United States in 1984.

Sallie and Andrea now collaborate with mills globally to shape the Savel collections' subtle designs. After graduating from Vassar and HEC (Paris), Andrea opened Savel's New York office in 1994.

Savel strives to bring innovative fabric designs with luxurious textures and a broad breadth of color to the interior designer. The collections are available through trade only showrooms in all major cities across the United States and in London. Savel's customer service is personal, responsive, and has led to long lasting client relationships.



To the Trade fabrics available through our showroom in New York's DDB and across the country.

VISIT US

Flexible and focused, one of Savel's most important goals is to contribute to their clients' success. You are invited to visit the Savel showroom at the Decoration and Design Building in New York to see our newest collections. If you would like to request specific memos or receive an introductory fabric overview please email newyork@savelinc.com or reach out to our partner showrooms and representatives directly.

The Decoration and Design Building

979 Third Ave.
Suite 1819
New York, NY 10022

CONTACT US

NEW YORK

(212) 473-2669
newyork@savelinc.com

www.savelinc.com
@savelfabrics

CONTENTS

*To skip to a page, please
click on the page number.*

SAVEL

About The Collection	04
Adana	05
Adana Stripe	06
Alize	07
Alpine	08
Belen	09
Belleville	10
Bristol	11
Candelaria	12
Cappucines	13
Cashmere Velvet	14
Castello	15
Castilla Performance	16
Chamonix	17
Confetti	18
Dominique	19
Electra	20
Elegance	21
Endurance	22
Grenelle	23
Harmattan	24
Kas	25
Levant	26
Luxe Lana	27
Majestic	28
Marbella	29
Meribel	30
Milano	31
Minna	32
Mistral	33
Palazzo	34–35

Palmas	36
Rivoli	37
Scirocco	38
Serre	39
Sorbonne	40
Trevi	41
Tuscan	42
Vendome	43
Veneto	44
Vosges	45

SAVEL OUTDOOR

About The Collection	46
Arene Outdoor	47
Baia Outdoor	48
Deauville Outdoor	49
Ferrat Outdoor	50
Fontane Outdoor	51
Golfi Outdoor	52
Lido Outdoor	53
Outdoor Boucle	54
Outdoor Sheer	55
Rimini Outdoor	56

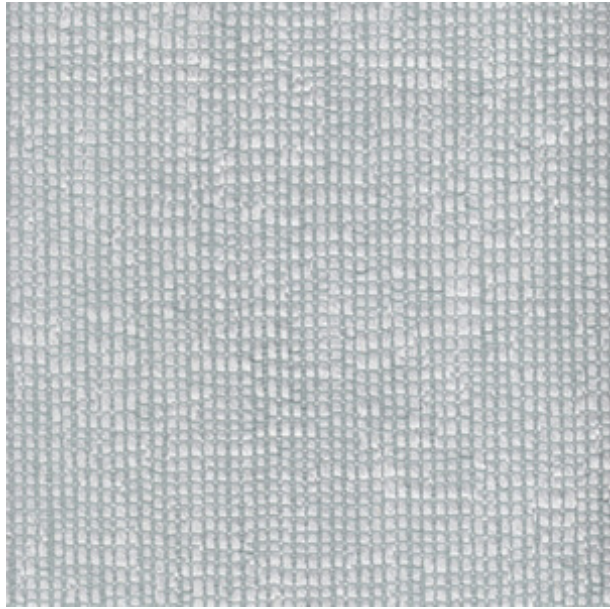
SALADINO FOR SAVEL

About The Collection	57
Aero	58
Limoges	59
Montecito	60
Stonewash	61

SAVEL COLLECTION



ADANA



PATTERN: Adana

COLOR: Agave

WIDTH: 54"

ORIGIN: Turkey

CONTENT: 66% Linen, 21% Cotton, 10% Viscose, 3% Polyester

DURABILITY: Passes 15,000 double rubs

CLEANING INSTRUCTIONS: Dry Clean

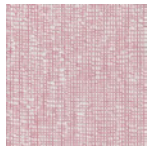
MORE AVAILABLE COLORS:



Calla Lily



Almond



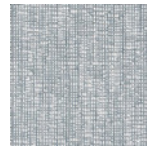
Coral



Rose



Silver



Slate



Bluestone



Lichen



Lilac

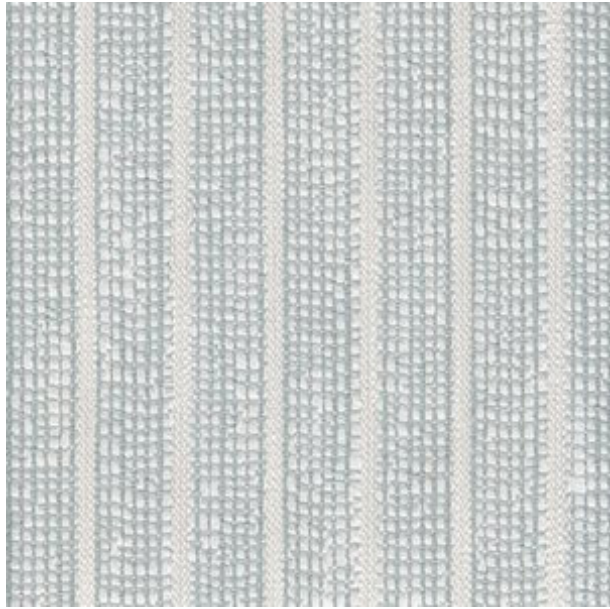


Lavender



Spring Green

ADANA STRIPE



PATTERN: Adana Stripe

COLOR: Agave

WIDTH: 54"

ORIGIN: Turkey

CONTENT: 61% Linen, 20% Viscose, 14% Cotton, 3% Polyester

REPEAT: H 2.75"

CLEANING INSTRUCTIONS: Dry Clean

MORE AVAILABLE COLORS:



Calla Lily



Almond



Coral



Rose



Silver



Slate



Bluestone



Spring
Green

ALIZE



PATTERN: Alize

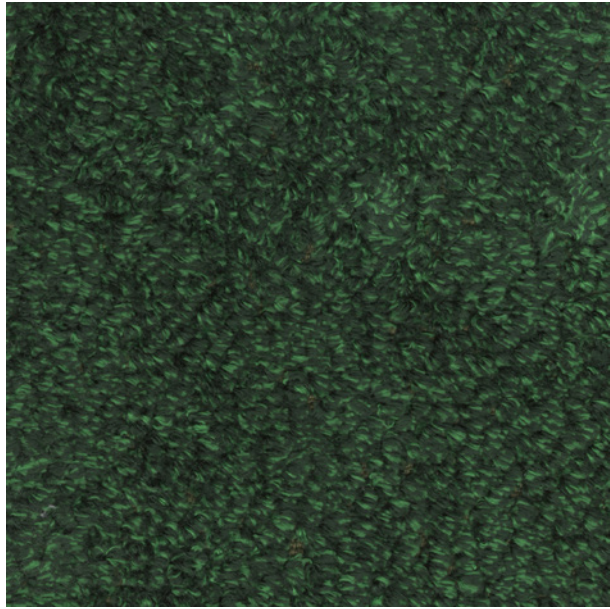
COLOR: Cream

WIDTH: 125"

ORIGIN: Spain

CONTENT: 100% Polyester

ALPINE



PATTERN: Alpine

COLOR: Forest

WIDTH: 55"

ORIGIN: Italy

CONTENT: 65% Acrylic, 35% Polyester

DURABILITY: Passes 30,000 double rubs

FR RATING: CAL 117

CLEANING INSTRUCTIONS: Dry Clean

MORE AVAILABLE COLORS:



Doe



Snow



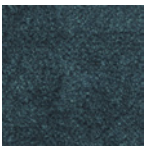
Dove



Latte



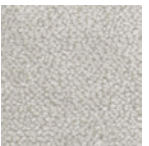
Midnight



Ocean



Chocolate



Cream

BELEN



PATTERN: Belen

COLOR: Coral

WIDTH: 54"

ORIGIN: Turkey

CONTENT: 50% Linen, 27% Cotton, 20% Viscose, 3% Polyester

REPEAT: V 5", H 1.5"

DURABILITY: Passes 21,000 double rubs

CLEANING INSTRUCTIONS: Dry Clean

MORE AVAILABLE COLORS:



Spring
Green



Rose



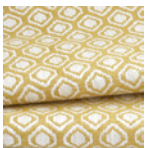
Agave



Almond



Silver

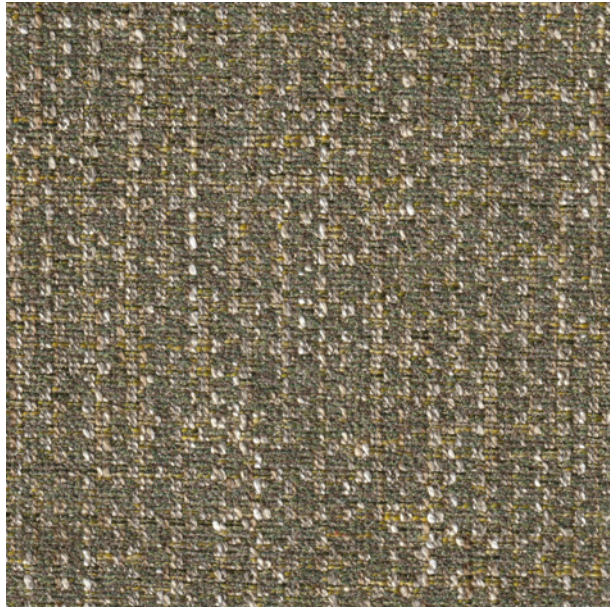


Marigold



Bluestone

BELLEVILLE



PATTERN: Belleville

COLOR: Moss

WIDTH: 54"

ORIGIN: Italy

CONTENT: 50% Polyester, 39% Acrylic, 11% Viscose

DURABILITY: Passes 27,000 double rubs

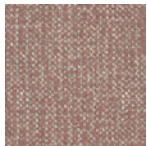
FR RATING: CAL 117

CLEANING INSTRUCTIONS: Dry Clean

MORE AVAILABLE COLORS:



River



Berry



Rose



Driftwood



Granite

BRISTOL



PATTERN: Bristol

COLOR: River

WIDTH: 55"

ORIGIN: Belgium

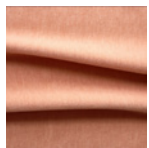
CONTENT: Face: 52% Wool, 48% Tencel / Back: 42% Cotton, 30% Wool

DURABILITY: 45,000 double rubs

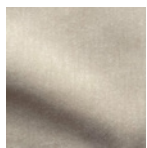
FR RATINGS: CA 117, BS-5852 (2006)

CLEANING INSTRUCTIONS: Dry Clean

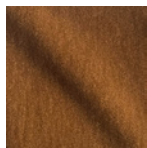
MORE AVAILABLE COLORS:



Peach



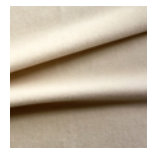
Cream



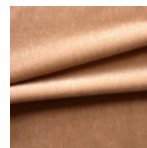
Butterscotch



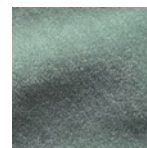
Shell



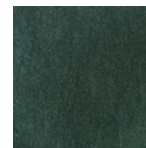
Oyster



Light Clay



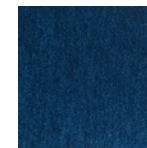
Aloe



Pine



Navy



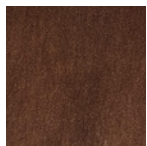
Ocean



Frost



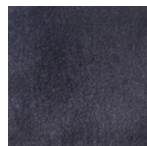
Smoke



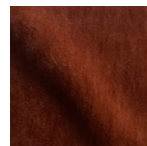
Walnut



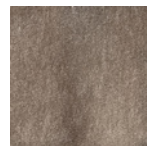
Celadon



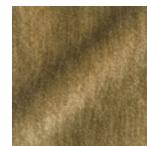
Midnight



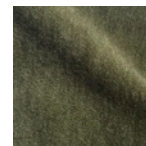
Cinnamon



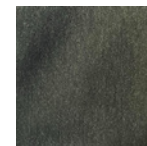
Driftwood



Lemongrass



Palm
Green



Jungle
Green

CANDELARIA



PATTERN: Candelaria

COLOR: Cream

WIDTH: 55"

ORIGIN: Spain

CONTENT: 37% PAC, 31% PES, 30% Cotton, 2% O.F.

REPEAT: 1" V, 9" H

DURABILITY: 20,000 double rubs

FR RATINGS: BS 5852 part 1

FINISH: CLEAN stain resistant finish

CLEANING INSTRUCTIONS: Spot clean with damp, soft, cloth and soapy water

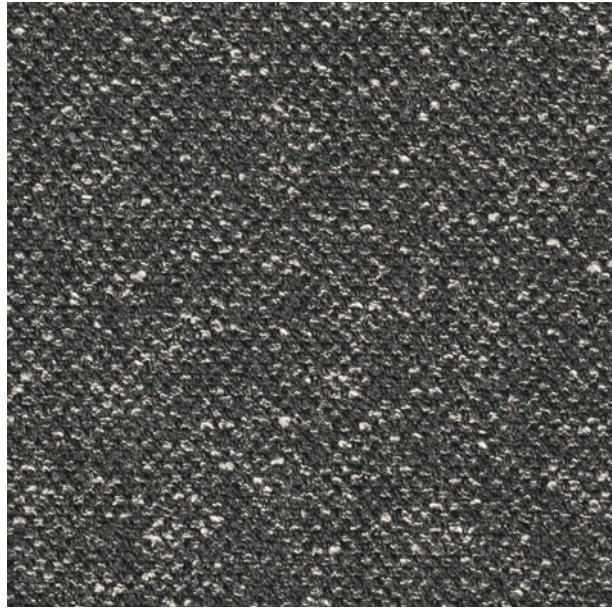
NOTES: REACH Compliant, 70% Recycled Cotton (of total)

MORE AVAILABLE COLORS:



Silver

CAPPUCINES



PATTERN: Cappucines

COLOR: Shale

WIDTH: 54"

ORIGIN: Italy

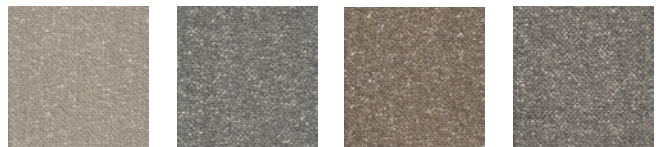
CONTENT: 46% Cotton, 22% Acrylic, 14% Polyester, 6% Linen, 6% VI, 3% Nylon, 3% AF

DURABILITY: Passes 40,000 double rubs

FR RATING: CAL 117

CLEANING INSTRUCTIONS: Dry Clean

MORE AVAILABLE COLORS:



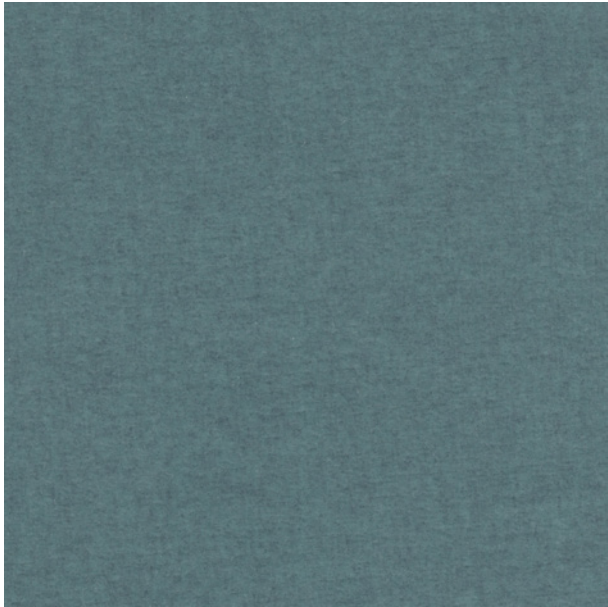
Stone

Granite

Mocha

Slate

CASHMERE VELVET



PATTERN: Cashmere Velvet
COLOR: River
WIDTH: 55"
ORIGIN: Italy
CONTENT: 80% Cotton, 20% Cashmere Pile
DURABILITY: Passes 50,000 double rubs
CLEANING INSTRUCTIONS: Dry Clean

MORE AVAILABLE COLORS:



Ash Brown Peacock Fawn Lake Cream Mushroom Jade Steel Buff

CASTELLO



PATTERN: Castello

COLOR: Champagne

WIDTH: 55"

ORIGIN: Italy

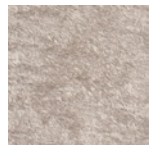
CONTENT: 59% PC, 41% PL

DURABILITY: Passes 30,000 double rubs

FR RATING: CAL 117, BS 5852-1:1979 Cigarette

CLEANING INSTRUCTIONS: Dry Clean

MORE AVAILABLE COLORS:



Dove



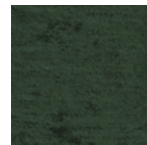
Cocoa



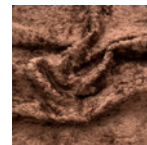
Ivory



Silver



Emerald



Chocolate



Steel Blue

CASTILLA PERFORMANCE



PATTERN: Castilla Performance

COLOR: Feather

WIDTH: 55"

ORIGIN: Spain

CONTENT: 53% PES, 30% Cotton, 17% PAC

DURABILITY: Passes 40,000 double rubs

FR RATING: CAL 117, BS 5852-01

LIGHTFASTNESS: ISO 105-B02 (5)

CLEANING INSTRUCTIONS: Spot Clean, Machine Washable, Air Dry

FINISH: CLEAN stain resistant finish

NOTES: REACH compliant, AZO dye free, ballpoint proof, easy clean

MORE AVAILABLE COLORS:



Cream

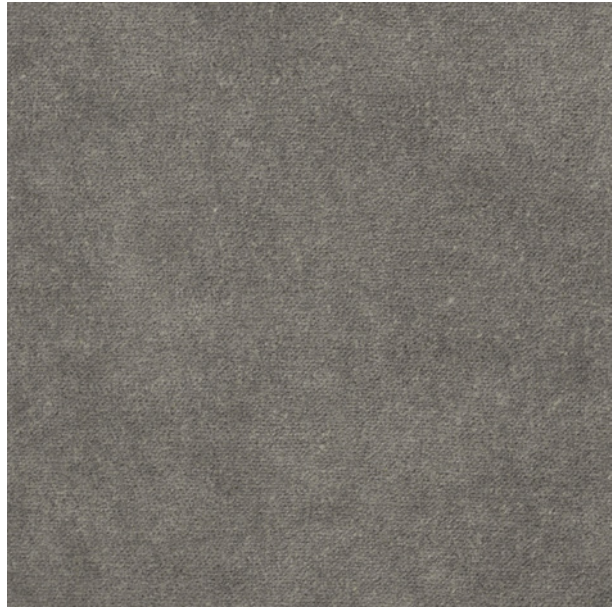


Flax



Rose

CHAMONIX



PATTERN: Chamonix

COLOR: Mink

WIDTH: 55"

ORIGIN: Italy

CONTENT: 80% Polyester, 20% Linen (Pile), 100% Polyester (Back)

DURABILITY: Passes 80,000 double rubs

FR RATINGS: CAL 117

CLEANING INSTRUCTIONS: Dry Clean

MORE AVAILABLE COLORS:



Ochre

Aqua

Navy

Doe

Feather

Mocha

CONFETTI



PATTERN: Confetti

COLOR: Blueberry and Chocolate

WIDTH: 55"

ORIGIN: Italy

CONTENT: 73% PC, 24% PL, 3% VI

DURABILITY: Passes 30,000 double rubs

FR RATINGS: CAL 117, BS 5852-1:1979 Cigarette

CLEANING INSTRUCTIONS: Dry Clean

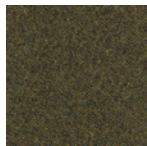
MORE AVAILABLE COLORS:



Flax



Roses



Greens



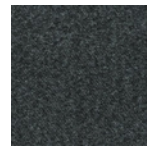
Spices



Grapes



Berries



Blueberry



Lemon
and Grass



Coffee
and Cream



Bark

DOMINIQUE



PATTERN: Dominique

COLOR: Camel

WIDTH: 55"

ORIGIN: Italy

CONTENT: 100% Recycled Polyester

DURABILITY: Passes 80,000 double rubs

FR RATINGS: CAL 117, BS 5852-1:1979 Cigarette

CLEANING INSTRUCTIONS: Dry Clean

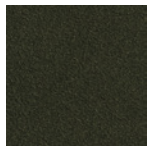
MORE AVAILABLE COLORS:



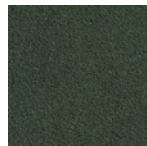
Ash



Navy



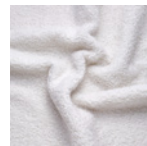
Moss



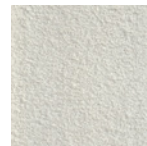
Pine



Blush



Snow



Cream



Spice



Cinnamon



Chocolate



Cameo
Rose

ELECTRA



PATTERN: Electra

COLOR: Oxblood Red 168

WIDTH: 55"

ORIGIN: Holland

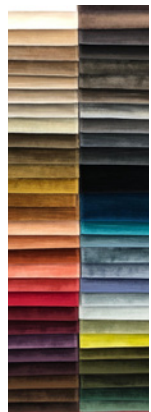
CONTENT: 100% Trevira CS

DURABILITY: 80,000 double rubs

FR RATINGS: CAL 117, NFPA 260

CLEANING INSTRUCTIONS: Dry Clean

MORE AVAILABLE COLORS:



Available in
58 colors



Agean
Night



Blue Coral



Buttercup



California
Clay



Cub



Dull Gold



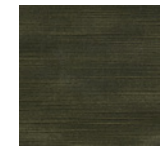
Green
Endive



Mojave
Gold



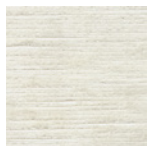
Oatmeal



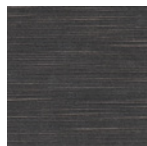
Olive



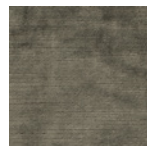
Peacock



Pristine



Raisin



Rock Ridge



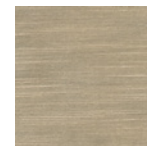
Rose Dust



Salix



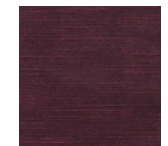
Sand Dollar



Sesame

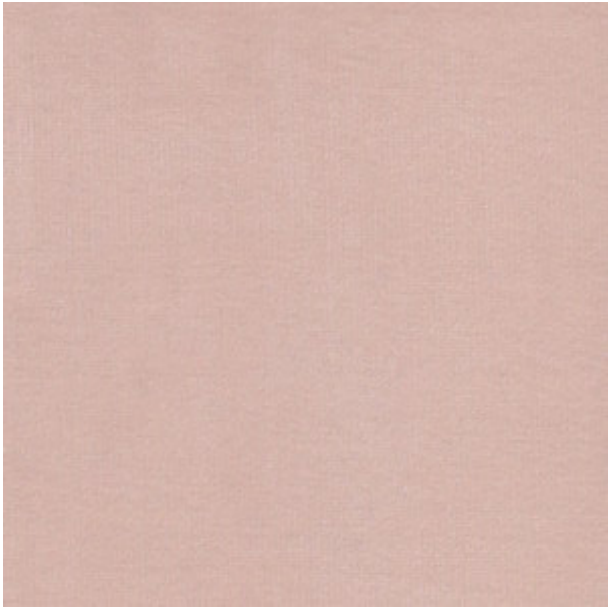


Sky Blue



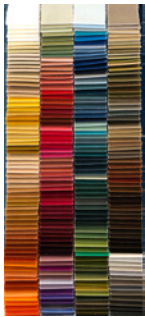
Wild Rose

ELEGANCE

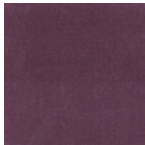


PATTERN: Elegance
COLOR: E24151
WIDTH: 55"
ORIGIN: Holland
CONTENT: 100% Cotton Velvet
FINISH: Teflon Stain Resistant Finish
DURABILITY: Passes 40,000 double rubs
NOTE: Elegance is available in 266 colors.

MORE AVAILABLE COLORS:



E25810



E29606



E25048



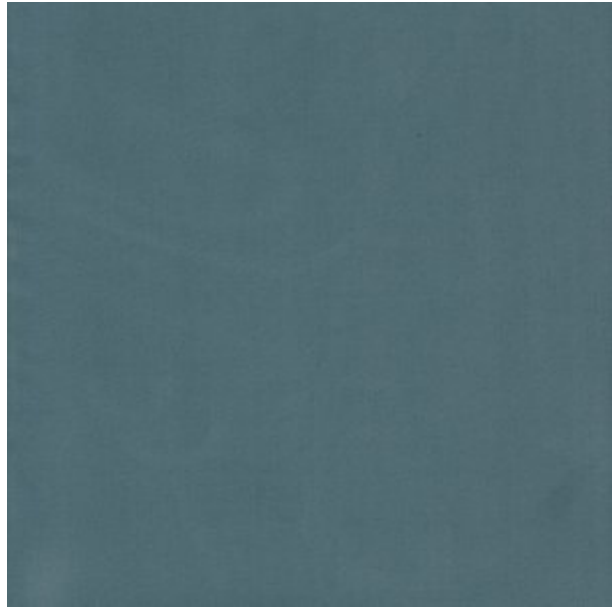
E24303



E25270

Available in
266 colors

ENDURANCE



PATTERN: Endurance

COLOR: Teal

WIDTH: 55"

ORIGIN: Italy

CONTENT: 100%

DURABILITY: 140,000 double rubs

FR RATINGS: CA 117, NFPA 260

LIGHTFASTNESS: Xenotest 150 S-6/7

CLEANING INSTRUCTIONS: Dry Clean

MORE AVAILABLE COLORS:



Mustard

Mushroom

Navy

Hunter

Lapis

Oxblood

Pine

Frost

Sandstone

GRENELLE



PATTERN: Grenelle

COLOR: Cream

WIDTH: 54"

ORIGIN: Italy

CONTENT: 45% Cotton, 15% Wool, 13% Acrylic, 19% Viscose, 8% Nylon

DURABILITY: Passes 60,000 double rubs

FR RATING: CAL 117

CLEANING INSTRUCTIONS: Dry Clean

MORE AVAILABLE COLORS:



Ivory

Dust Grey

Latte

Sage

Forest

Seal

Ash

River

Navy

Wine

Teal

HARMATTAN



PATTERN: Harmattan

COLOR: Cream

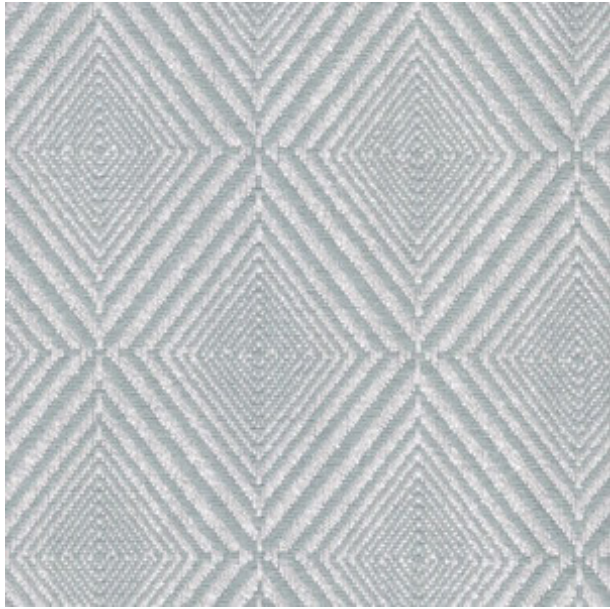
WIDTH: 112"

ORIGIN: Spain

CONTENT: 43% Cotton, 52% PES, 5% Viscose

REPEAT: 1/2" V, 1/2" H

KAS



PATTERN: Kas

COLOR: Agave

WIDTH: 54"

ORIGIN: Turkey

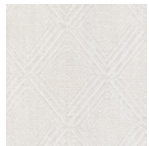
REPEAT: V 5.31", H 5.31"

CONTENT: 51% Linen, 27% Viscose, 16% Cotton, 6% Polyester

DURABILITY: 15,000 double rubs

CLEANING INSTRUCTIONS: Dry Clean

MORE AVAILABLE COLORS:



Calla Lily



Almond



Rose



Silver



Coral



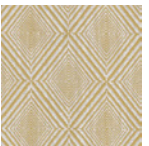
Petal



Lilac



Slate



Marigold



Lichen



Bluestone



Spring
Green

LEVANT



PATTERN: Levant

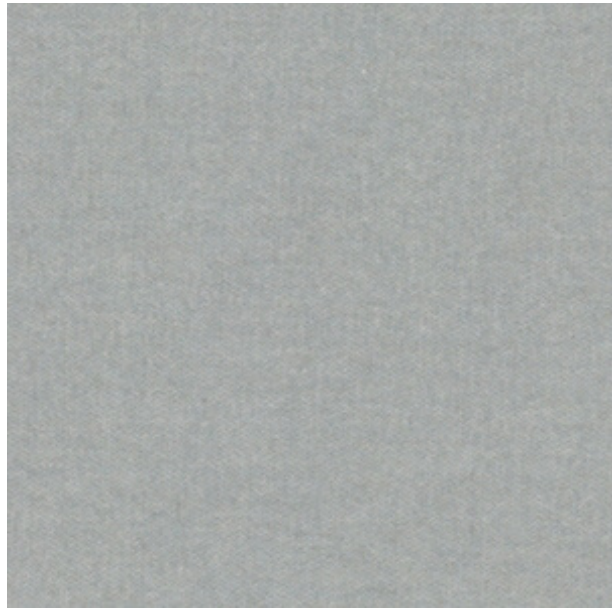
COLOR: Cream

WIDTH: 125"

ORIGIN: Spain

CONTENT: 100% Polyester

LUXE LANA



PATTERN: Luxe Lana

COLOR: Robin

WIDTH: 55"

ORIGIN: Italy

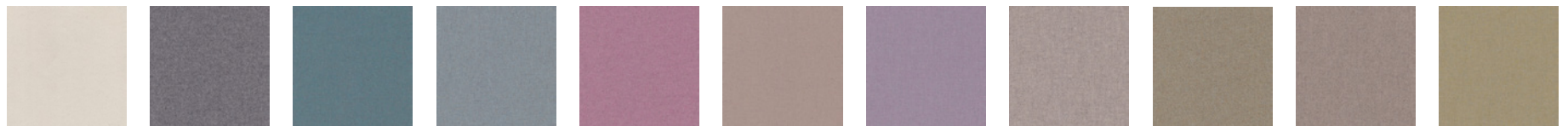
CONTENT: 80% Wool, 20% Polyamide

DURABILITY: 80,000 double rubs

FR RATINGS: CAL 117, NFPA 260

CLEANING INSTRUCTIONS: Dry Clean

MORE AVAILABLE COLORS:



Cream

Gull Grey

Agean

Surf

Ballet

Doeskin

Lilac

Oatmeal

Loden

Limestone

Lettuce



Ash

Elm

Burl

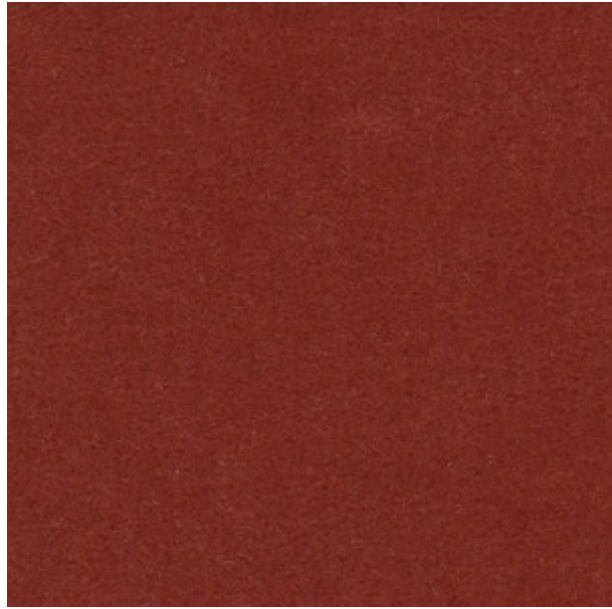
Fawn

Stone

Celery

Military

MAJESTIC



PATTERN: Majestic

COLOR: 143

WIDTH: 55"

ORIGIN: Holland

CONTENT: 100% Wool Mohair Face

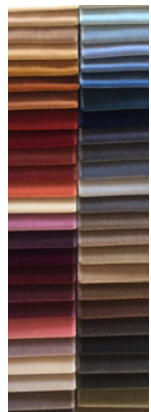
DURABILITY: 40,000 double rubs

FR RATINGS: CA 117, NFPA 260

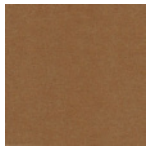
CLEANING INSTRUCTIONS: Dry Clean

NOTE: Majestic is available in 52 colors.

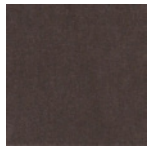
MORE AVAILABLE COLORS:



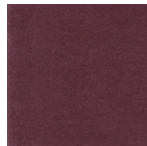
Available in
52 colors



761



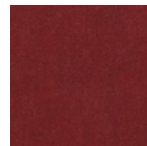
655



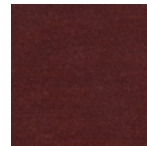
865



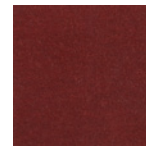
841



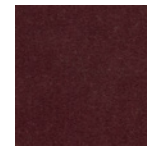
142



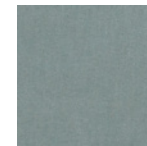
144



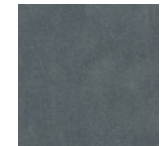
168



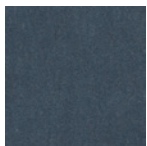
182



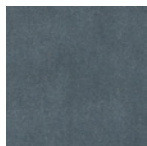
206



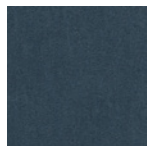
207



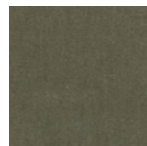
250



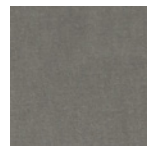
254



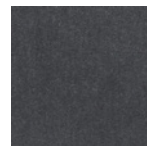
260



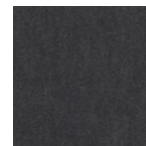
347



610



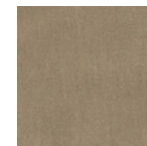
621



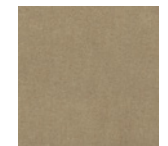
660



700

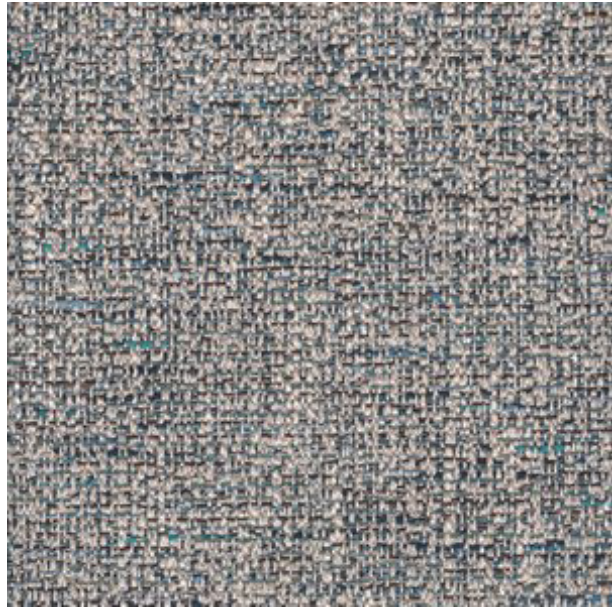


710



723

MARBELLA



PATTERN: Marbella

COLOR: Blue

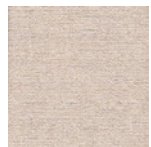
WIDTH: 54"

ORIGIN: Italy

CONTENT: 58% Cotton, 28% Viscose, 7% Linen, 6% PC, 1% Polyester

CLEANING INSTRUCTIONS: Dry Clean

MORE AVAILABLE COLORS:



Ivory



Mustard



Rose



Grey

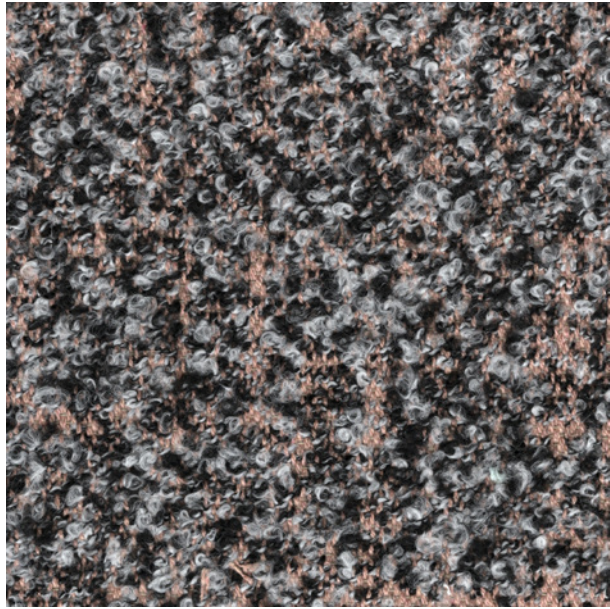


Green



Teal

MERIBEL



PATTERN: Meribel

COLOR: Rose

WIDTH: 55"

ORIGIN: Italy

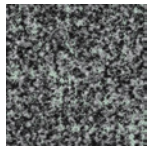
CONTENT: 52% Cotton, 39% Acrylic, 9% Polyester

DURABILITY: Passes 25,000 double rubs

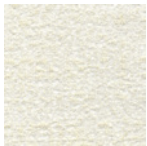
FR RATINGS: CAL 117

CLEANING INSTRUCTIONS: Dry Clean

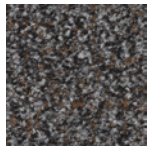
MORE AVAILABLE COLORS:



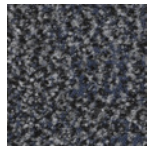
Aqua



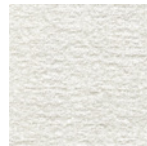
Cream



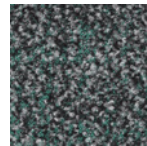
Bark



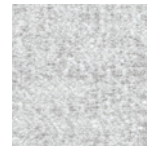
Indigo



Snow



Turquoise



Cloud



Doe

MILANO



PATTERN: Milano

COLOR: Grey and Cream

WIDTH: 55"

ORIGIN: Italy

CONTENT: 70% Cotton, 21% Viscose, 9% Nylon

REPEAT: V 2.50", H 2.50"

CLEANING INSTRUCTIONS: Dry Clean

MORE AVAILABLE COLORS:



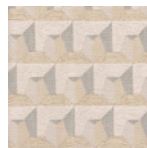
Black and
Cream



Greens



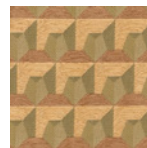
Blues



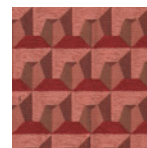
Sand and
Cream



Tan and
Cream



Yellow and
Greens



Coral and
Red

MINNA



PATTERN: Minna

COLOR: Agave

WIDTH: 54"

ORIGIN: Turkey

CONTENT: 79% Viscose, 21% Polyester

CLEANING INSTRUCTIONS: Dry Clean

MORE AVAILABLE COLORS:



Calla Lily



Silver



Slate



Coral

MISTRAL



PATTERN: Mistral

COLOR: Cream

WIDTH: 118"

ORIGIN: Spain

CONTENT: 30% Linen, 70% PES



PATTERN: Palazzo
COLOR: Billiard Green
WIDTH: 55"
ORIGIN: Holland
CONTENT: 100% Wool Mohair Face, 100% Cotton Base
DURABILITY: 90,000 double rubs
FR RATINGS: CA 117E, IMO, 1021 1 & 2
CLEANING INSTRUCTIONS: Dry Clean

MORE AVAILABLE COLORS:



See more colors on next page →



PATTERN: Palazzo

COLOR: Dusty Rose

WIDTH: 55"

ORIGIN: Holland

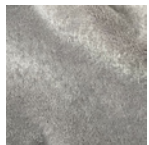
CONTENT: 100% Wool Mohair Face, 100% Cotton Base

DURABILITY: 90,000 double rubs

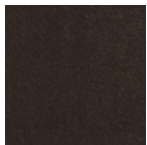
FR RATINGS: CA 117E, IMO, 10211 & 2

CLEANING INSTRUCTIONS: Dry Clean

MORE AVAILABLE COLORS:



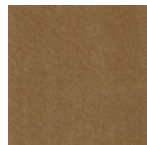
Pewter



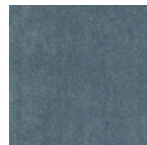
Chocolate



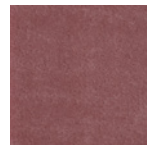
Alabaster



Honey



Blue Skies



Antique
Rose

PALMAS



PATTERN: Palmas

COLOR: Cream

WIDTH: 55"

ORIGIN: Spain

CONTENT: 48% PAC, 39% PES, 12% Cotton, 1% O.F.

REPEAT: 9.5" V, 9.5" H

DURABILITY: 30,000 double rubs

FR RATINGS: BS 5852 part 1

FINISH: CLEAN stain resistant finish

CLEANING INSTRUCTIONS: Spot clean with damp, soft, cloth and soapy water

NOTES: REACH Compliant, 70% Recycled Cotton (of total)

MORE AVAILABLE COLORS:



Silver

RIVOLI



PATTERN: Rivoli

COLOR: Spice

WIDTH: 55"

ORIGIN: Italy

CONTENT: 72% Recycled Polyester, 28% PL

DURABILITY: Passes 50,000 double rubs

FR RATING: CAL 117, BS 5852-1:1979 Cigarette

CLEANING INSTRUCTIONS: Dry clean

MORE AVAILABLE COLORS:



Chestnut



Ivory



Oyster



Gold



Cocoa



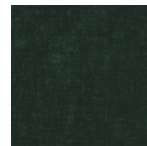
Olive



Flint



River



Emerald



Midnight



Marine Blue

SCIROCCO



PATTERN: Scirocco

COLOR: Cream

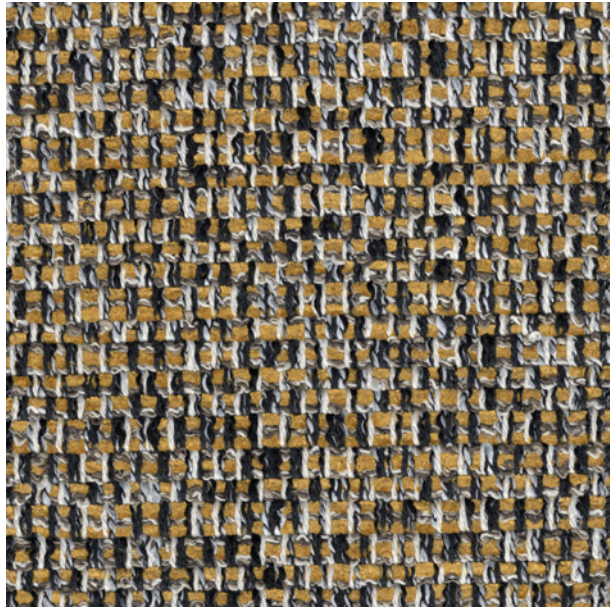
WIDTH: 125"

ORIGIN: Spain

CONTENT: 100% Polyester

REPEAT: 1" V, 1" H

SERRE



PATTERN: Serre

COLOR: Ochre

WIDTH: 55"

ORIGIN: Italy

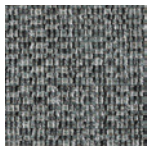
CONTENT: 40% Cotton, 25% Viscose, 15% Acrylic, 15% Polyester, 5% AF

DURABILITY: Passes 30,000 double rubs

FR RATINGS: CAL 117

CLEANING INSTRUCTIONS: Dry Clean

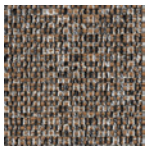
MORE AVAILABLE COLORS:



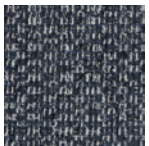
River



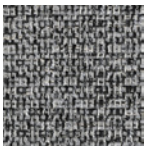
Marble



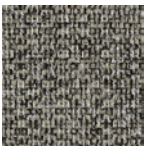
Tiger Eye



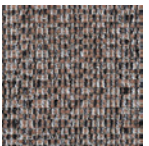
Navy



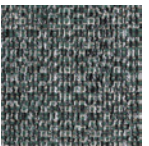
Silver



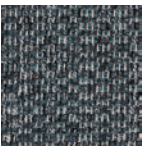
Doe



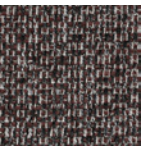
Rose



Pine



Ocean



Umber

SORBONNE



PATTERN: Sorbonne

COLOR: Cocoa

WIDTH: 54"

ORIGIN: Italy

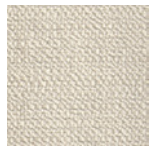
CONTENT: 35% Wool, 25% PC, 20% Polyester, 20% Cotton

DURABILITY: Passes 30,000 double rubs

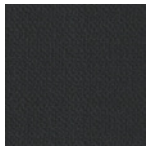
FR RATING: CAL 117

CLEANING INSTRUCTIONS: Dry Clean

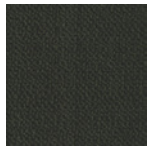
MORE AVAILABLE COLORS:



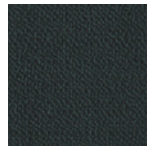
Cream



Midnight



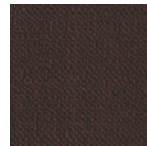
Forest



Peacock



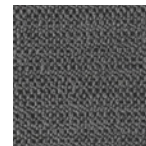
Granite



Wine



Oyster



Iron

TREVI



PATTERN: Trevi

COLOR: Mocha

WIDTH: 56"

ORIGIN: Italy

CONTENT: 39% Linen, 27% Jute, 24% Viscose, 10% Cotton

DURABILITY: Passes 25,000 double rubs

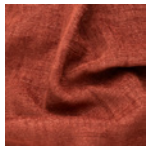
FR RATING: CAL 117, BS 5852-1:1979 Cigarette

CLEANING INSTRUCTIONS: Dry clean

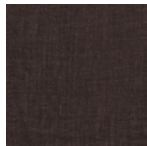
MORE AVAILABLE COLORS:



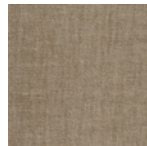
Jade



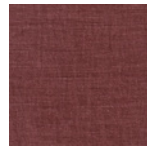
Paprika



Eggplant



Flax



Berry



Honey



Olive



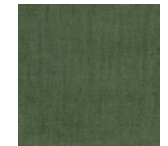
Shell



Smoke



Cream



Forest



Peacock



Steel Blue

TUSCAN



PATTERN: Tuscan

COLOR: Rose

WIDTH: 55"

ORIGIN: Italy

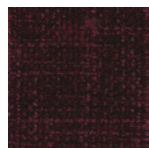
CONTENT: 57% Acrylic, 37% Textured Polyester, 6% Viscose

DURABILITY: 23,000 double rubs

FR RATING: CAL 117

CLEANING INSTRUCTIONS: Dry Clean

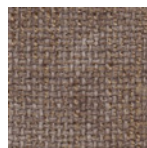
MORE AVAILABLE COLORS:



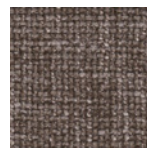
Burgundy



Cappuccino



Latte



Fieldstone



Verde



Forest



Gold



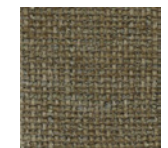
Marble



Granite



Midnight



Moss



Ocean



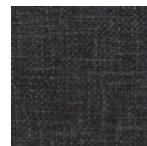
River



Slate

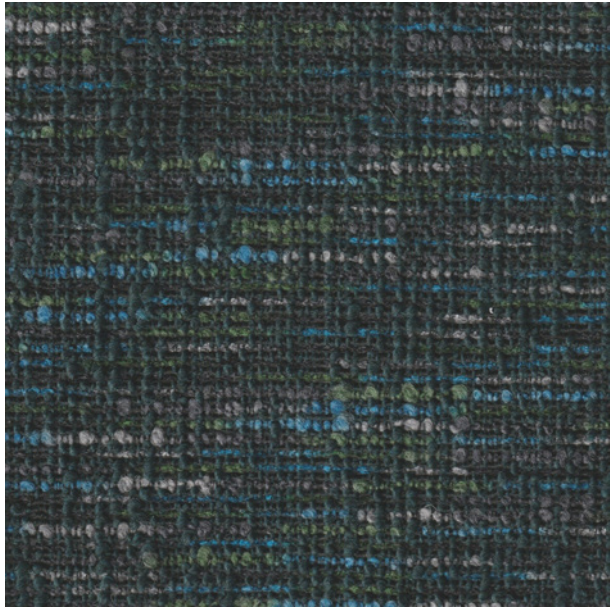


Sandstone



Iron

VENDOME



PATTERN: Vendome

COLOR: Peacock

WIDTH: 54"

ORIGIN: Italy

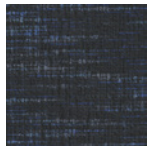
CONTENT: 28% Wool, 24% Polyester, 21% Cotton, 19% PC, 5% PA, 3% AF

DURABILITY: Passes 35,000 double rubs

FR RATING: CAL 117

CLEANING INSTRUCTIONS: Dry Clean

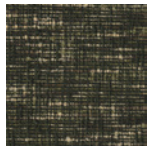
MORE AVAILABLE COLORS:



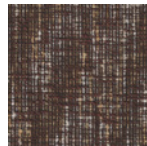
Cobalt



Limestone



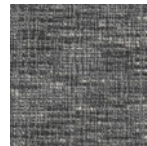
Forest



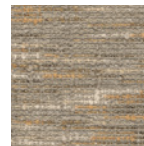
Wine



Marble



Granite



Flint

VENETO



PATTERN: Veneto

COLOR: Dove

WIDTH: 55"

ORIGIN: Italy

CONTENT: 65% PC, 35% PL

DURABILITY: Passes 30,000 double rubs

FR RATING: CAL 117, BS 5852-1:1979 Cigarette

CLEANING INSTRUCTIONS: Dry clean

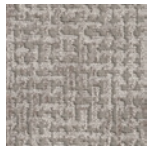
MORE AVAILABLE COLORS:



Ivory



Cream



Steel

VOSGES



PATTERN: Vosges

COLOR: Sand

WIDTH: 55"

ORIGIN: Italy

CONTENT: 77% PC; 22% PL, 1% Viscose

DURABILITY: Passes 40,000 double rubs

FR RATING: CAL 117, BS 5852-1:1979 Cigarette

CLEANING INSTRUCTIONS: Dry clean

MORE AVAILABLE COLORS:



Granite



Rose

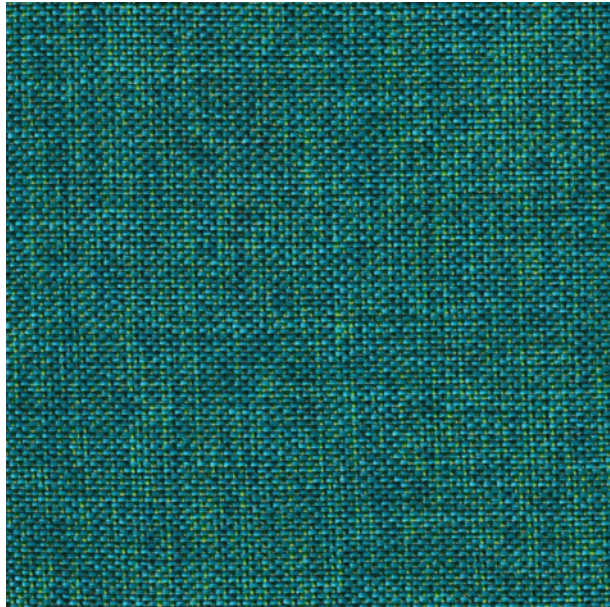


Stone

SAVEL OUTDOOR COLLECTION



ARENE OUTDOOR



COLLECTION: Savel Outdoor Fabric

PATTERN: Arene Outdoor

COLOR: Aqua and Green

WIDTH: 55"

ORIGIN: Italy

CONTENT: 60% Polypropylene, 40% Outdoor Polyester

DURABILITY: Passes 40,000 double rubs

LIGHTFASTNESS: UNI EN ISO 105 B 02 ≥ 7

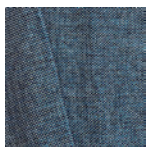
FR RATINGS: Passes the CAL-117

CLEANING INSTRUCTIONS: Machine Washable, Air Dry

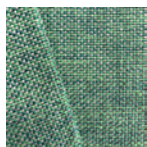
MORE AVAILABLE COLORS:



Grey



Navy



Green



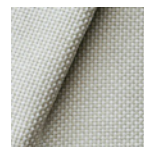
Brown



Taupe

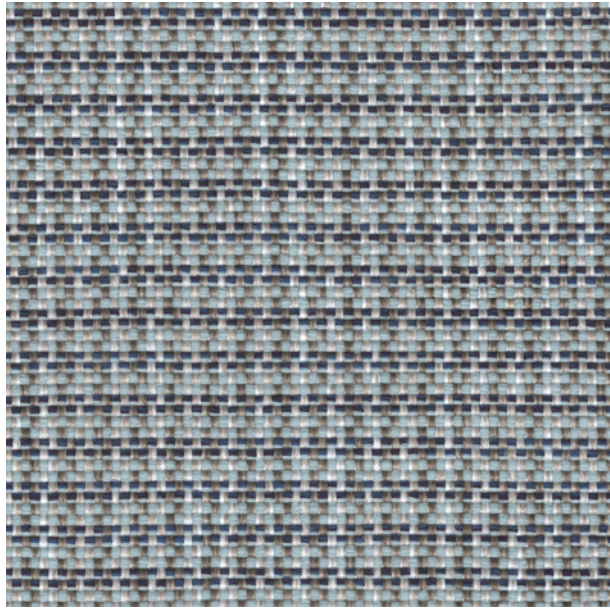


Orange



White

BAIA OUTDOOR



COLLECTION: Savel Outdoor Fabric

PATTERN: Baia Outdoor

COLOR: Aqua and Navy

WIDTH: 55"

ORIGIN: Italy

CONTENT: 95% Polypropylene, 5% Outdoor Polyester

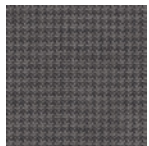
DURABILITY: 50,000 double rubs

LIGHTFASTNESS: UNI EN ISO 105 B 02 ≥ 7

FR RATINGS: CAL 117, NFPA 260

CLEANING INSTRUCTIONS: Machine Washable

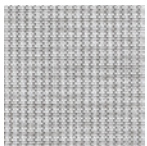
MORE AVAILABLE COLORS:



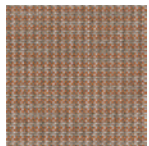
Grey



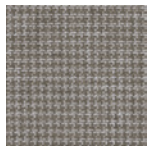
Green and
Navy



Grey and
White



Orange

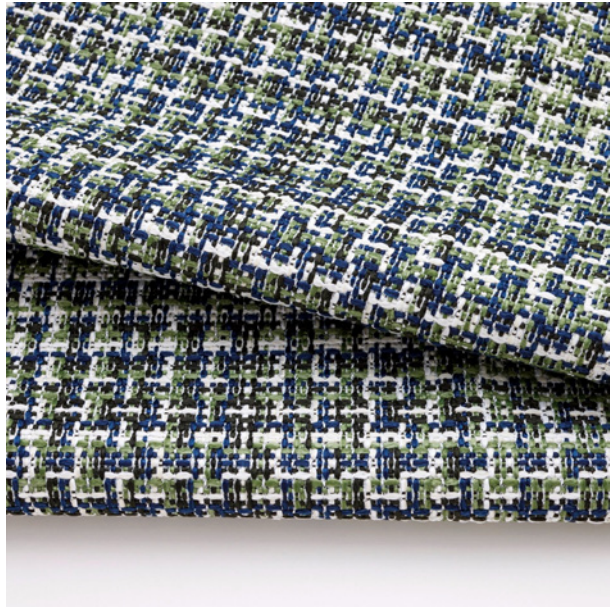


Taupe



Navy

DEAUVILLE OUTDOOR



COLLECTION: Savel Outdoor Fabric

PATTERN: Deauville Outdoor

COLOR: Green

WIDTH: 55"

ORIGIN: Italy

CONTENT: 80% Polypropylene, 20% Polyester

DURABILITY: Passes 30,000 double rubs

LIGHTFASTNESS: ISO 105-B02: 7

FR RATINGS: Passes the 2003 Source O Cigarette Test

CLEANING INSTRUCTIONS: Machine Washable, Air Dry

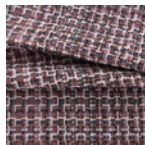
MORE AVAILABLE COLORS:



Blue



Tan and
Grey



Dark Pink

FERRAT OUTDOOR



COLLECTION: Savel Outdoor Fabric

PATTERN: Ferrat Outdoor

COLOR: Blue

WIDTH: 55"

ORIGIN: Italy

CONTENT: 100% Polypropylene

DURABILITY: Passes 35,000 double rubs

LIGHTFASTNESS: ISO 105-B02: 7

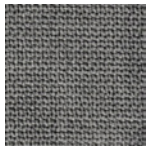
FR RATINGS: Passes the 2003 Source O Cigarette Test

CLEANING INSTRUCTIONS: Machine Washable, Air Dry

MORE AVAILABLE COLORS:



Green



Grey



Dark Pink



Tan



White

FONTANE OUTDOOR



COLLECTION: Savel Outdoor Fabric

PATTERN: Fontane Outdoor

COLOR: Brown and Green

WIDTH: 55"

ORIGIN: Italy

CONTENT: 60% Polypropylene, 40% Outdoor Polyester

REPEAT: H 3"

DURABILITY: Passes 40,000 double rubs

LIGHTFASTNESS: UNI EN ISO 105 B 02 ≥ 7

FR RATINGS: Passes the CAL-117

CLEANING INSTRUCTIONS: Machine Washable, Air Dry

MORE AVAILABLE COLORS:



Aqua and
Green



Grey



Taupe



Brown

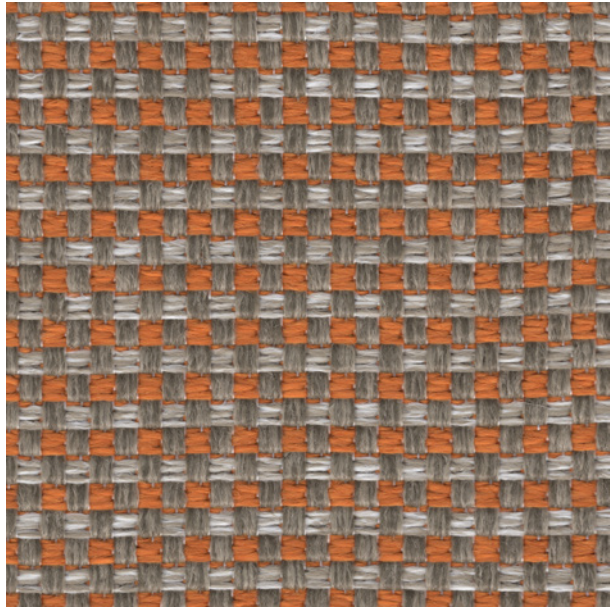


Aqua and
Navy



Orange

GOLFI OUTDOOR



COLLECTION: Savel Outdoor Fabric

PATTERN: Golfi Outdoor

COLOR: Orange

WIDTH: 55"

ORIGIN: Italy

CONTENT: 95% Polypropylene, 5% Outdoor Polyester

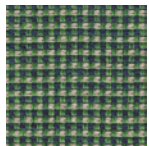
DURABILITY: Passes 50,000 double rubs

LIGHTFASTNESS: UNI EN ISO 105 B 02 ≥ 7

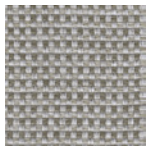
FR RATINGS: CAL 117, NFPA 260

CLEANING INSTRUCTIONS: Machine Washable

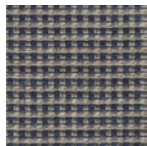
MORE AVAILABLE COLORS:



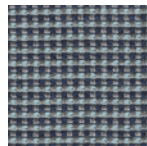
Green and
Navy



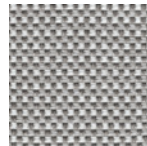
Taupe



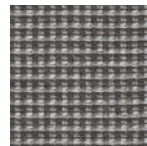
Navy



Aqua and
Navy



Grey and
White



Grey

LIDO OUTDOOR



COLLECTION: Savel Outdoor Fabric

PATTERN: Lido Outdoor

COLOR: Aqua and Navy

WIDTH: 55"

ORIGIN: Italy

CONTENT: 1000% Outdoor Polyester

REPEAT: H13", V 13"

DURABILITY: Passes 40,000 double rubs

LIGHTFASTNESS: UNI EN ISO 105 B 02 ≥6

FR RATINGS: Passes the CAL-117

CLEANING INSTRUCTIONS: Machine Washable, Air Dry

MORE AVAILABLE COLORS:



Aqua and
Green



Brown and
Green



Grey



Brown



Taupe



Orange

OUTDOOR BOUCLE



COLLECTION: Savel Outdoor Fabric

PATTERN: Outdoor Boucle

COLOR: Tiger Eye

WIDTH: 55"

ORIGIN: Italy

CONTENT: 65% Polypropylene, 35% Outdoor Polyester

DURABILITY: Passes 50,000 double rubs

LIGHTFASTNESS: UNI EN ISO 105 B 02 $\geq 6/7$

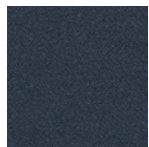
FR RATINGS: CAL 117, NFPA 260

CLEANING INSTRUCTIONS: Machine Washable

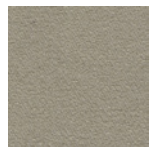
MORE AVAILABLE COLORS:



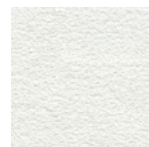
Stone



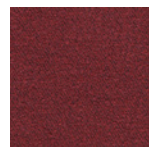
Navy



Flax



White



Cherry



Grey



Taupe



Aqua

OUTDOOR SHEER



COLLECTION: Savel Outdoor Fabric

PATTERN: Outdoor Sheer

COLOR: Cream

WIDTH: 130"

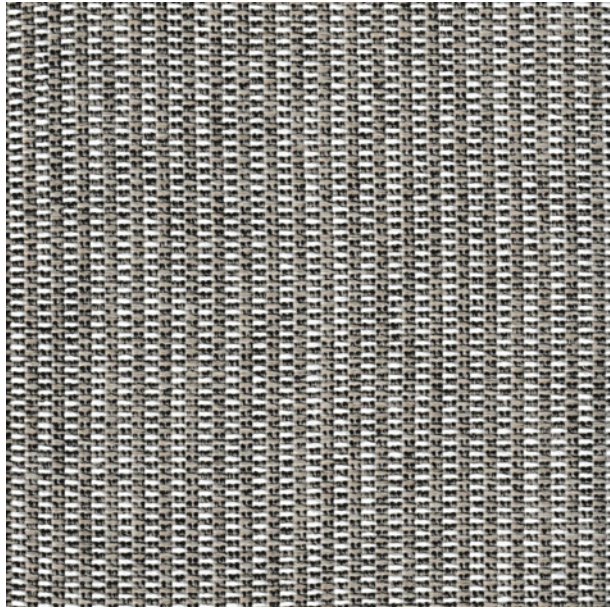
ORIGIN: Italy

CONTENT: 100% Solution Dyed Acrylic

LIGHTFASTNESS: UNI EN ISO 105 B 02 7/8

CLEANING INSTRUCTIONS: Machine Washable, Air Dry

RIMINI OUTDOOR



COLLECTION: Savel Outdoor Fabric

PATTERN: Rimini Outdoor

COLOR: Taupe

WIDTH: 55"

ORIGIN: Italy

CONTENT: 60% Polypropylene, 40% Outdoor Polyester

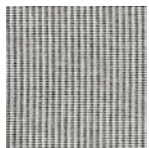
DURABILITY: Passes 40,000 double rubs

LIGHTFASTNESS: UNI EN ISO 105 B 02 ≥ 7

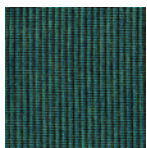
FR RATINGS: Passes the CAL-117

CLEANING INSTRUCTIONS: Machine Washable, Air Dry

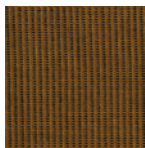
MORE AVAILABLE COLORS:



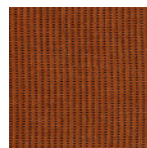
Grey



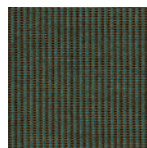
Aqua and
Green



Brown



Orange



Aqua and
Navy



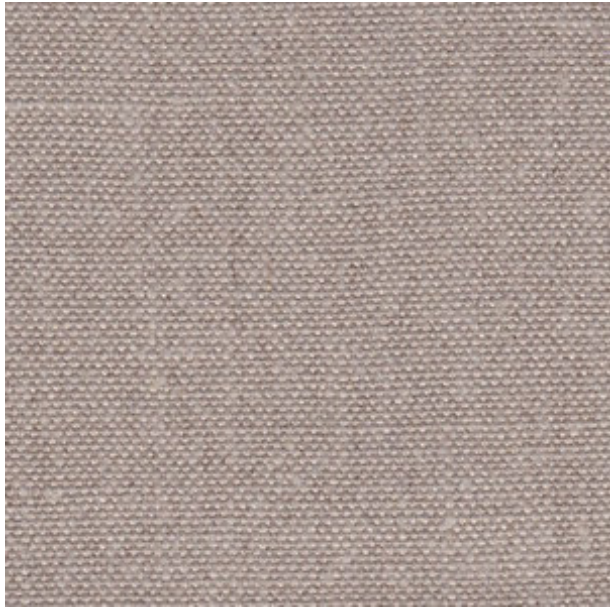
Brown and
Green

SALADINO FOR SAVEL COLLECTION



In 2008 Savel partnered with famed American interior architect John Saladino to create the Saladino for Savel textile collection. The elegant, classically inspired fabrics are designed by Mr. Saladino in his iconic style. Often referred to as the designers' designer, John Saladino's timeless work continues his philosophy of mixing "old with new" and appeals to both traditional and modern clients. Savel distributes the Saladino for Savel collection nationally and internationally.

AERO



COLLECTION: Saladino For Savel

PATTERN: Aero

COLOR: Flax

WIDTH: 51"

ORIGIN: Belgium

CONTENT: 100% Belgian Linen

DURABILITY: Passes 22,000 double rubs

CLEANING INSTRUCTIONS: Dry Clean

MORE AVAILABLE COLORS:

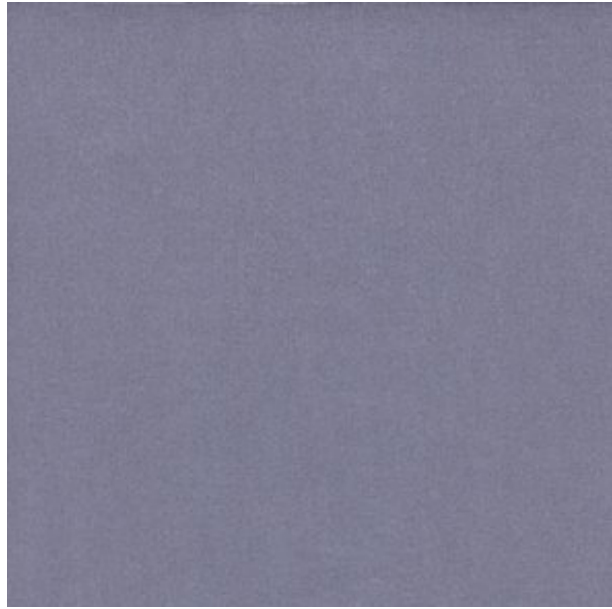


Natural



Oatmeal

LIMOGES



COLLECTION: Saladino For Savel

PATTERN: Limoges

COLOR: Periwinkle

WIDTH: 55"

ORIGIN: Holland

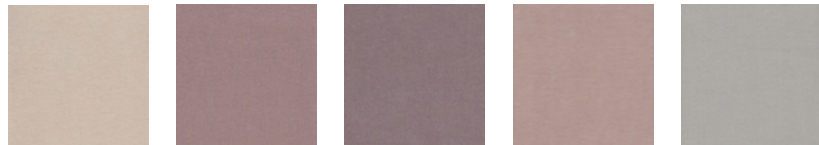
CONTENT: 100% Kid Mohair (Face), 100% Cotton (Back)

DURABILITY: Passes 80,000 double rubs

FR RATINGS: BS 5852 Crib 5

CLEANING INSTRUCTIONS: Dry Clean

MORE AVAILABLE COLORS:



Dune

Dove

Dusk

Fawn

Celadon

MONTECITO



COLLECTION: Saladino For Savel

PATTERN: Montecito

COLOR: Dove

WIDTH: 110"

ORIGIN: Italy

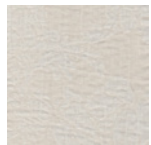
REPEAT: V 28" and H 31.5"

CONTENT: 69% Linen, 23% Wool, 8% PA

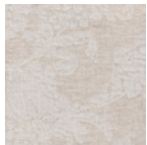
CLEANING INSTRUCTIONS: Dry Clean

NOTE: Install railroaded, as shown

MORE AVAILABLE COLORS:



Cream



Sand



Full Repeat

STONEWASH



COLLECTION: Saladino For Savel

PATTERN: Stonewash

COLOR: Oyster

WIDTH: 51"

ORIGIN: Belgium

CONTENT: 100% Belgian Linen

DURABILITY: Passes 22,000 double rubs

CLEANING INSTRUCTIONS: Dry Clean

MORE AVAILABLE COLORS:



Natural



Flax

Savel Inc.

www.savelinc.com