

# Savel Inc.

## PRODUCT INFORMATION



**PATTERN:** Electra

**COLOR:** Steel

**WIDTH:** 55"

**ORIGIN:** Holland

**CONTENT:** 100% Trevira CS

**DURABILITY:** 80,000 double rubs

**FR RATINGS:** Passes the CAL 117 and the NFPA 260

**CLEANING INSTRUCTIONS:** Dry Clean

**NOTE:** Available in 58 Colors.

## MORE AVAILABLE COLORS:



Oxblood  
Red



Agean  
Night



Blue Coral



Buttercup



California  
Clay



Cub



Dull Gold



Green  
Endive



Mojave  
Gold



Oatmeal



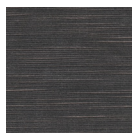
Olive



Peacock



Pristine



Raisin



Rock  
Ridge



Rose Dust



Salix



Sand  
Dollar



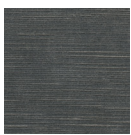
Sesame



Sky Blue



Song  
Thrush



Steeple  
Gray



Sundial



Walnut



Warm  
Sand



Wild Dove



Wild Rose



Willow  
Gray



Wood  
Thrush

979 Third Ave., #1819, New York, NY 10022

newyork@savelinc.com (212) 473-2669

3109 Grand Ave., Suite # 194, Coconut Grove, FL 33133

miami@savelinc.com (305) 444-1220

www.savelinc.com