

# Savel Inc.

## PRODUCT INFORMATION



**PATTERN:** Electra

**COLOR:** Blue Coral

**WIDTH:** 55"

**ORIGIN:** Holland

**CONTENT:** 100% Trevira CS

**DURABILITY:** 80,000 double rubs

**FR RATINGS:** Passes the CAL 117 and the NFPA 260

**CLEANING INSTRUCTIONS:** Dry Clean

**NOTE:** Available in 58 Colors.

## MORE AVAILABLE COLORS:



Oxblood  
Red



Agean  
Night



Buttercup



California  
Clay



Cub



Dull Gold



Green  
Endive



Mojave  
Gold



Oatmeal



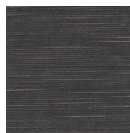
Olive



Peacock



Pristine



Raisin



Rock  
Ridge



Rose Dust



Salix



Sand  
Dollar



Sesame



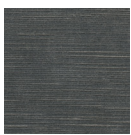
Sky Blue



Song  
Thrush



Steel



Steeple  
Gray



Sundial



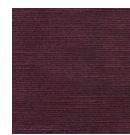
Walnut



Warm  
Sand



Wild Dove



Wild Rose



Willow  
Gray



Wood  
Thrush

**979 Third Ave., #1819, New York, NY 10022**

[newyork@savelinc.com](mailto:newyork@savelinc.com) (212) 473-2669

**3109 Grand Ave., Suite # 194, Coconut Grove, FL 33133**

[miami@savelinc.com](mailto:miami@savelinc.com) (305) 444-1220

[www.savelinc.com](http://www.savelinc.com)