

Savel Inc.

PRODUCT INFORMATION



PATTERN: Electra

COLOR: Agean Night

WIDTH: 55"

ORIGIN: Holland

CONTENT: 100% Trevira CS

DURABILITY: 80,000 double rubs

FR RATINGS: Passes the CAL 117 and the NFPA 260

CLEANING INSTRUCTIONS: Dry Clean

NOTE: Available in 58 Colors.

MORE AVAILABLE COLORS:



Oxblood
Red



Blue Coral



Buttercup



California
Clay



Cub



Dull Gold



Green
Endive



Mojave
Gold



Oatmeal



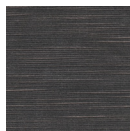
Olive



Peacock



Pristine



Raisin



Rock
Ridge



Rose Dust



Salix



Sand
Dollar



Sesame



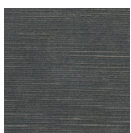
Sky Blue



Song
Thrush



Steel



Steeple
Gray



Sundial



Walnut



Warm
Sand



Wild Dove



Wild Rose



Willow
Gray



Wood
Thrush

979 Third Ave., #1819, New York, NY 10022

newyork@savelinc.com (212) 473-2669

3109 Grand Ave., Suite # 194, Coconut Grove, FL 33133

miami@savelinc.com (305) 444-1220

www.savelinc.com